

SECTIONS 19 AND 20, T19N, R17E, WM

FORMER C,M,&St.P RAILWAY

YAKIMA RIVER

TPN747734 (MBSW 757734)
133.81 ACRES (INC 3.12 AC)

-To WDFW

130.69 AC

ORIGINAL
BOUNDARY

3.12 AC

ADJUSTED BOUNDARY TO FOLLOW
NORTH RIGHT OF WAY OF KRD CANAL

KRD CANAL R/W

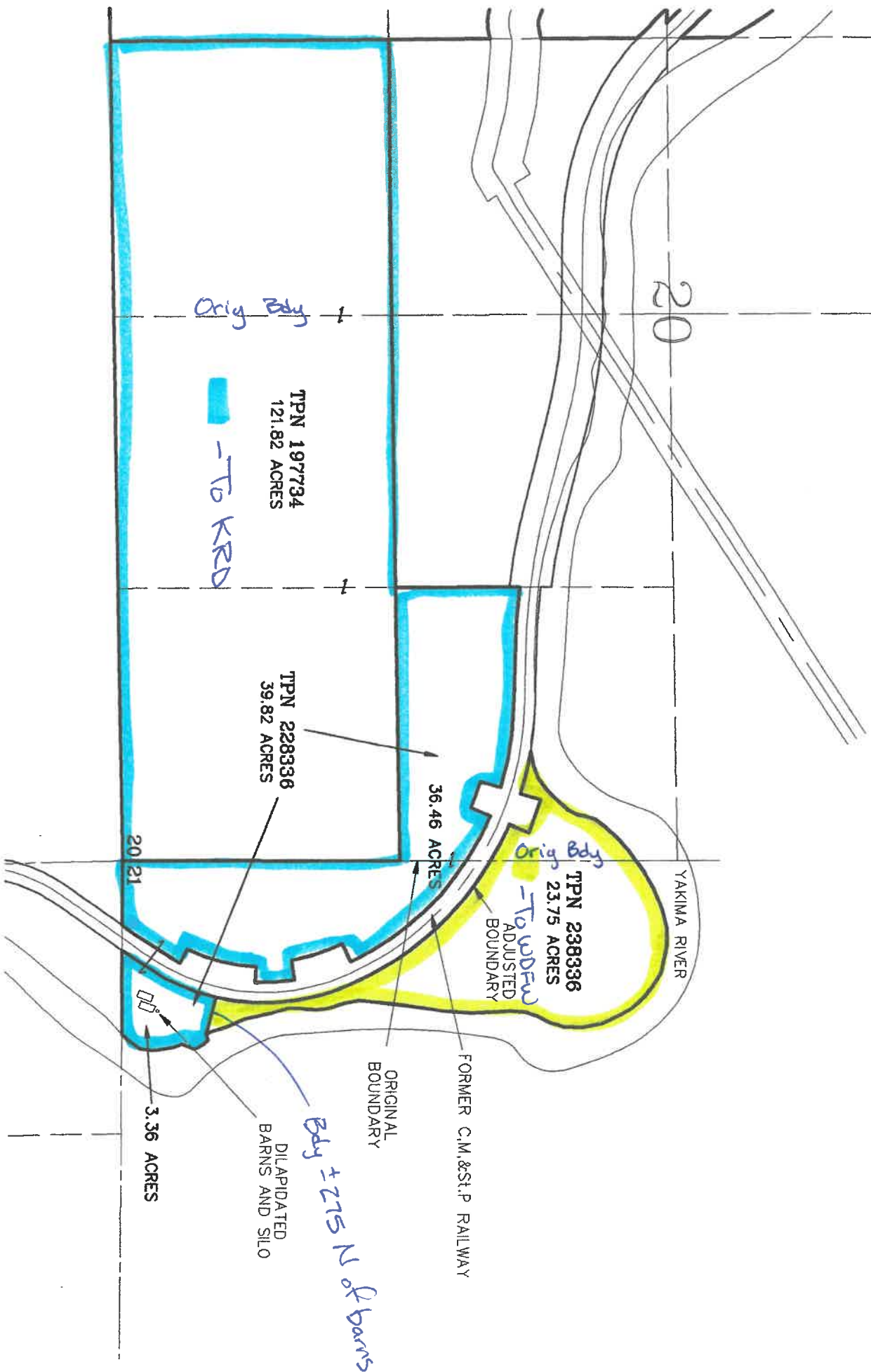
ORIGINAL
BOUNDARY

TPN 867734
162.16 ACRES

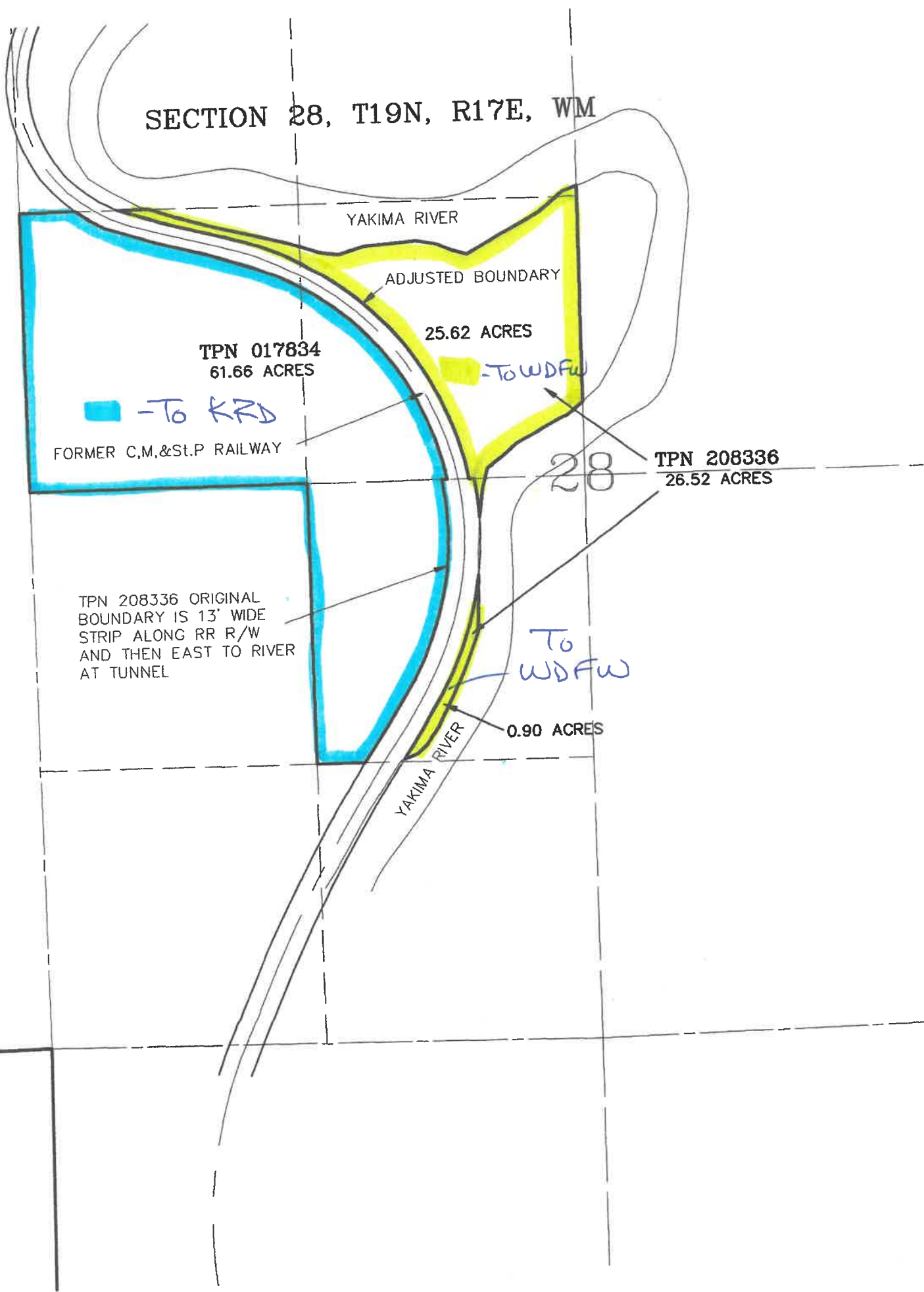
-To KRD

19 20

SECTIONS 20 AND 21, T19N, R17E, WM



SECTION 28, T19N, R17E, WM



SECTION 32, T19N, R17E, WM

